



# Luma Solar Shingle 80 Watt (LRSS)

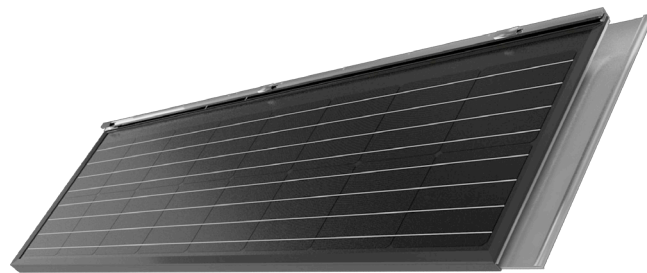
## High Efficiency Monocrystalline Solar Shingle



### Features

- ▶ Complete solar roofing system that seamlessly blends solar shingles with non-solar metal shingles
- ▶ Installs like traditional metal roofing
- ▶ Designed for air flow and wire harnesses under the solar shingles
- ▶ Only one penetration is required for the wires to go through the roof deck
- ▶ Solar cells have high conversion efficiencies resulting in superior power output performance
- ▶ Outstanding power output even in low light or high temperature conditions
- ▶ The “Luma Solar Kits” can be integrated with all roofing material

### Dimensions



**L 54.37” x W 15.62” x H 2”**

### Electrical Data (STC\*)

Maximum Power (Pmax)	80W
Performance Tolerance	+ / -3%
Maximum Power Voltage (Vmp)	8.56 V
Maximum Power Current (Imp)	9.34 A
Open Circuit Voltage (Voc)	10.43 V
Short Circuit Current (Isc)	9.89 A
Maximum DC System Voltage US	600 V
Maximum DC System Voltage EU	1000 V
Maximum Series Fuse Rating	20 amp
Efficiency	22.1%

\*Standard Test Conditions: 1000W/m<sup>2</sup> at an Air Mass of 1.5 and cell temperature of 25°C

### Temperature Coefficients

NOCT	45 +/- 2° C
Pmax	- 0.378 % /°C
Voc	- 0.268 % /°C
Isc	0.041 % /°C
Operating Temperature	- 40 °C / + 85 °C

### Features

Exposed Area Installed	52.5” x 14.65”
Weight	15.7 lbs (7.1 kg)
Static wind load	2400 Pa
Static snow load	5400 Pa
Cell Type	Monocrystalline
Solar Cells	16
Bypass Diode	SCHOTTKY Diodes (PST5040D)
Junction Box	RENHE SOLAR GF26xy (ULE312261)
Potting	DOWSIL™ 3-4207 Dielectric Tough Gel
Aluminum Mount	0.063” Extruded Aluminum

### Warranty & Certifications

**25 year** limited power warranty at 80%

**5 year** limited product warranty

- UL 7103
- UL 580 Approved
- ANSI/UL 790 Fire Rating: Class C
- TAS 125-03: Wind MPH 150+
- ASTM G 155-05a / B117-07a
- Available Listings: UL, CEC

### Luma Resources, LLC

2691 Leach Road Rochester Hills, MI 48309

(888) 733-5862 (888) SEE-LUMA

www.lumasolar.com hello@lumasolar.com



REV202280W